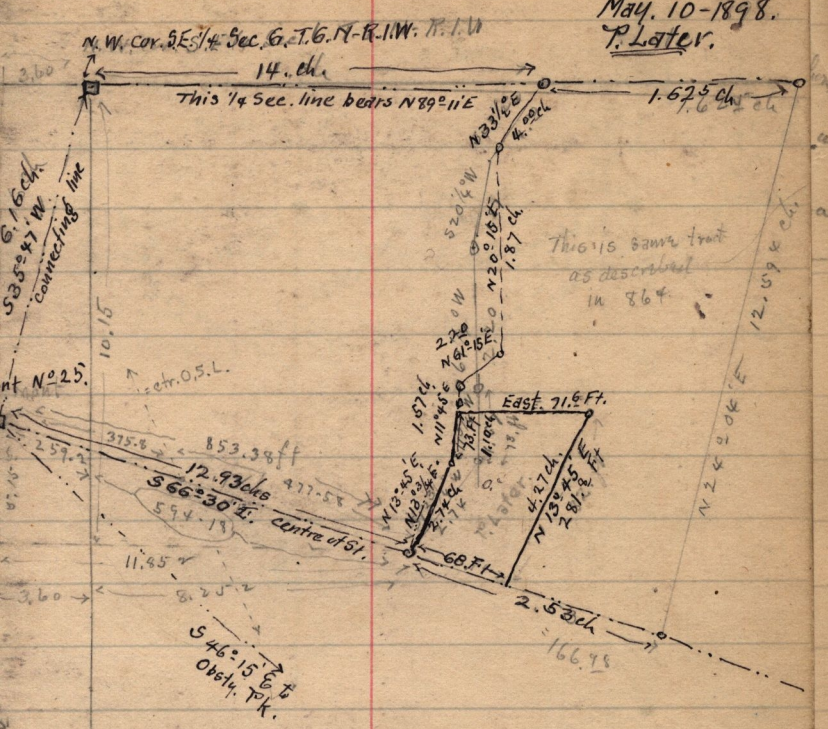


see J. pg. 11

WASHINGTON TERRITORY, N.S. DIV. ENG.

May. 10-1898.  
T. Later.



	N	S	E	W
N 13° 45' E	2.74		0.65	
N 11° 45' E	1.10	1.07	0.22	
East	1.085		1.085	
S 13° 45' W	4.27	4.14		1.015
N 66° 30' W	1.03			0.94
	4.14	4.14	1.959	1.959

Description - Pt. S.E. 1/4 Sec. 6. T. 6. N. R. 1. W.  
Beg. 10.15 chs. S and 8.25 ch. E. of N.W. cor. of 1/4  
in cent. of St. - N 13° 45' E, 2.74 ch., N 11° 45' E  
1.10 ch. - E. 1.085 ch., S 13° 45' W, 4.27 ch. to cent  
of St. N 66° 30' W, 1.03 ch. to beg. 4 a (?)